

Erratum: Perception of loudness and envelopment for different orchestral dynamics [J. Acoust. Soc. Am. 148, 2137–2145 (2020)]

Tapio Lokki, Laura McLeod and Antti Kuusinen

Citation: [The Journal of the Acoustical Society of America](#) **151**, 2843 (2022); doi: 10.1121/10.0010387

View online: <https://doi.org/10.1121/10.0010387>

View Table of Contents: <https://asa.scitation.org/toc/jas/151/5>

Published by the [Acoustical Society of America](#)

ARTICLES YOU MAY BE INTERESTED IN

[Reviews of Acoustical Patents](#)

The Journal of the Acoustical Society of America **151**, 2809 (2022); <https://doi.org/10.1121/10.0010351>

[Erratum: Recognizing individual concert halls is difficult when listening to the acoustics with different musical passages \[J. Acoust. Soc. Am. 148, 1380–1390 \(2020\)\]](#)

The Journal of the Acoustical Society of America **151**, 2897 (2022); <https://doi.org/10.1121/10.0010388>

[Experimental studies and simple numerical modeling of underwater electric discharges](#)

The Journal of the Acoustical Society of America **151**, 2844 (2022); <https://doi.org/10.1121/10.0010288>

[Individual differences in speech intelligibility at a cocktail party: A modeling perspective](#)

The Journal of the Acoustical Society of America **150**, 1076 (2021); <https://doi.org/10.1121/10.0005851>

[A war of coefficients or a meaningless wrangle over practical unessentials?](#)

The Journal of the Acoustical Society of America **150**, R5 (2021); <https://doi.org/10.1121/10.0006097>

[A study of the just noticeable difference of early decay time for symphonic halls](#)



The Journal of the Acoustical Society of America **151**, 80 (2022); <https://doi.org/10.1121/10.0009167>



Why Publish in POMA?

Watch Now 

Erratum: Perception of loudness and envelopment for different orchestral dynamics [J. Acoust. Soc. Am. 148, 2137–2145 (2020)]

Tapio Lokki,^{1,a)}  Laura McLeod,² and Antti Kuusinen³ 

¹Aalto Acoustics Lab, Department of Signal Processing and Acoustics, Aalto University, Espoo, Finland

²Arup, Manchester, United Kingdom

³Aalto Acoustics Lab, Department of Computer Science, Aalto University, Espoo, Finland

(Received 14 April 2022; accepted 18 April 2022; published online 27 April 2022)

<https://doi.org/10.1121/10.0010387>

[Editor: James F. Lynch]

Page: 2843

This erratum concerns Fig. 2 in the previously published paper.¹ Due to a programming error, the values of G and L_j were computed from one source only, not the average of all sources. The corrected figure and legend are shown below. Naturally, this small error in the computation of objective parameters does not change anything in the reported listening test signals and results in the original article.

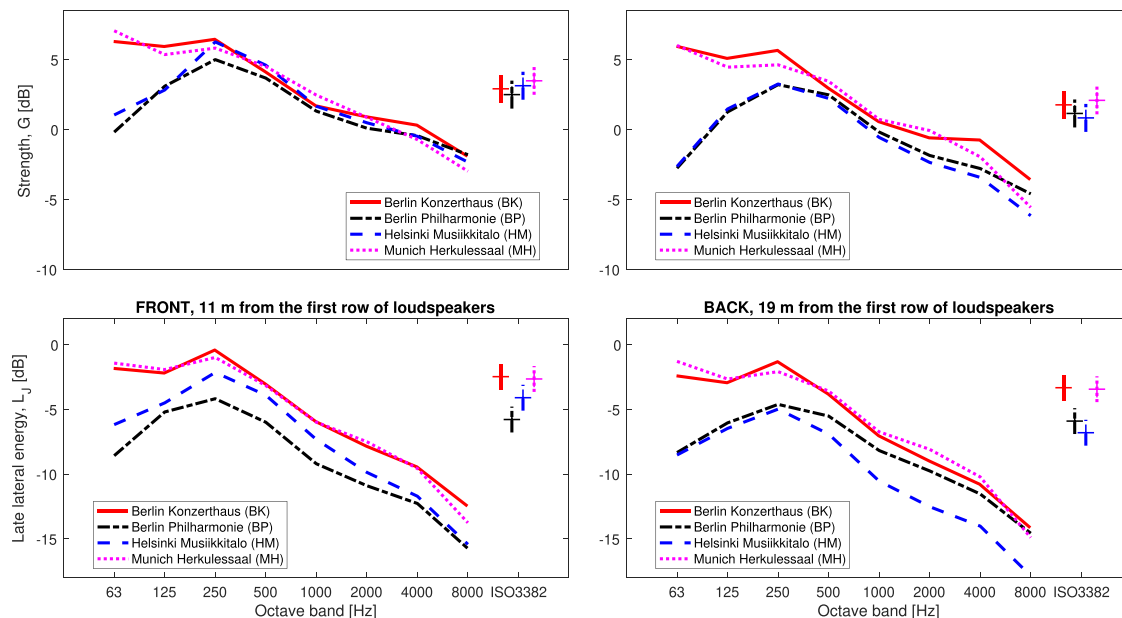


FIG. 2. (Color online) Standard (ISO3382-1:2009) objective parameters G and L_j at octave bands (averages of all 24 source channels) in both listening positions. The crosses in the last column indicate the average of the frequency bands as defined in the standard to predict subjective loudness and envelopment. The length of the vertical bar is the just noticeable difference (JND), which is said to be 1 dB in the standard.

¹T. Lokki, L. McLeod, and A. Kuusinen, “Perception of loudness and envelopment for different orchestral dynamics,” *J. Acoust. Soc. Am.* **148**(4), 2137–2145 (2020).

^{a)}Electronic mail: tapio.lokki@aalto.fi